

# STAR WARS™



Compatible  
with *Bluetooth*®

## DARTH VADER™ LIMITED COLLECTOR'S EDITION

ARCUS220 TWS GAMING EARBUDS

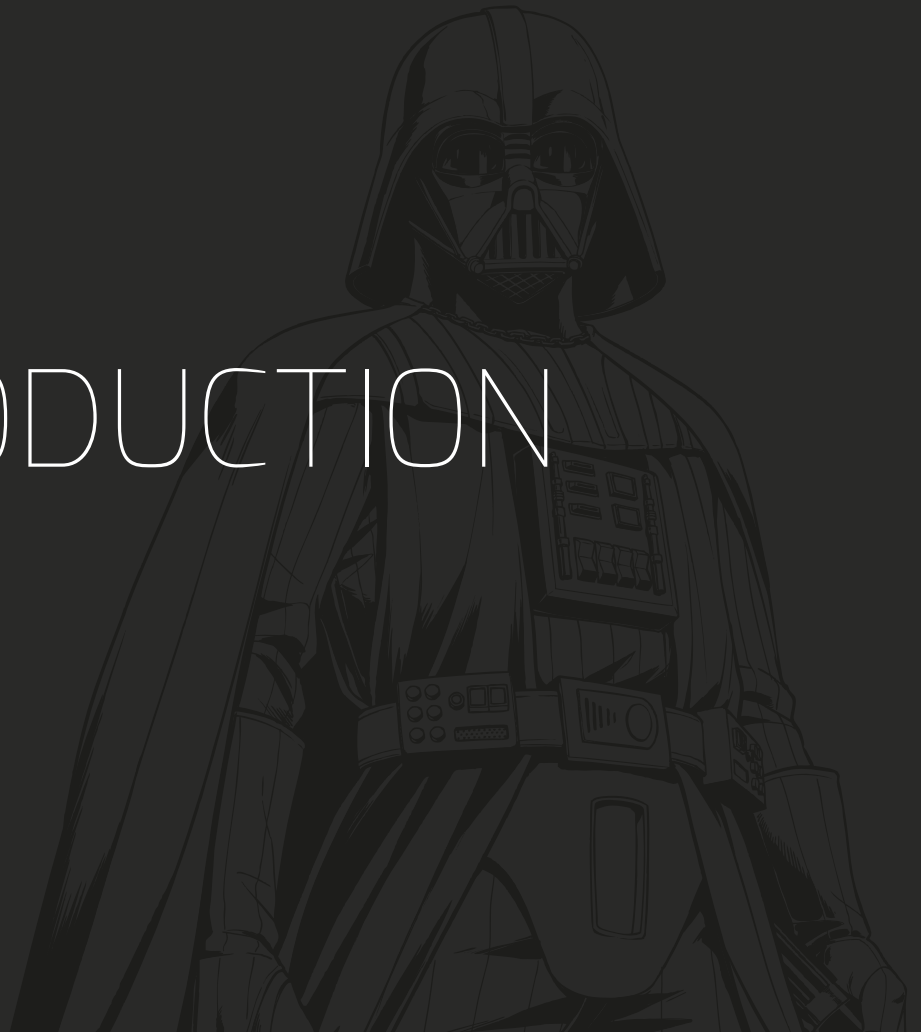
USER GUIDE



starwars.com  
© & ™ Lucasfilm Ltd.



# I. INTRODUCTION



Thank you for choosing Primus' new gaming **True Wireless Stereo earbuds**, specially designed for the serious gamer who doesn't want to lose the slightest detail of the adrenaline-loaded videogames. Suitable for the most realistic sound effects, these amazing earbuds deliver brilliant audio through noise-isolating drivers that will surely lure you into the most fantastic journey. By adopting the most advanced *Bluetooth*® V5.0, the **Arcus** wireless earbuds let you experience faster transmission rates, stronger connection stability, and longer range. They also feature special light effects, low latency and touch- sensitive controls, so you can fully focus on your next move staying at the top of your game!

We encourage you to thoroughly read this user guide to get the most out of this innovative and truly portable wireless audio device.

## HIGHLIGHTS

- **True wireless stereo (TWS) technology**  
Designed stream audio seamlessly through both earbuds at the same time.
- **Optimal 56ms latency for mobile gaming**  
A reliable transmission with near zero delay gives pro gamers the competitive edge.
- **Armed with the advanced ACC dual host decoding**  
Gamers can easily switch between music and gaming modes.
- **10mm gaming-grade dynamic drivers**  
Accurately capture the sound of flying bullets or the blast of epic struggles for a more engaging and immersive virtual experience.
- **Portable charging case**  
Capable of storing enough energy to last up to 5.5 cycles.
- **The gaming illumination mode on each earbud**  
Adds the thrill factor to every bit of the action.

## PACKAGE CONTENT

- TWS gaming earbuds (2)
- Portable charging case (1)
- Type-C USB charging cable (1)
- Silicone ear tips (S, M, L) (3 pairs)



# II. PRODUCT OVERVIEW





1. **Portable charging case:** Place earbuds inside the case to recharge. Controls are disabled when earpieces are inside the charging case.
2. **Charging case LED indicator:** Displays the current status of the case with the earbuds inside.
3. **Magnetic charging socket:** Place each earbud in the corresponding left and right side of the portable case.
4. **Charging case cover:** Open to automatically power on and synchronize the earbuds. Close it with the earbuds inside the compartment to power them off and start the charging process.
5. **Earbud with LED and soft-touch multifunction control:** Tap for music, phone call management, and mode selection feature.
6. **Removable silicone tips:** Provide a comfortable and secure fit.
7. **HD microphone:** Picks up your voice for phone calls, intra-game communications and hands-free management of your mobile device.
8. **Charging port:** Insert the Type-C USB cable in this jack.

**MULTIFUNCTION COMMAND**

**Description**

**MUSIC MODE**

**Play/pause:**  
Tap the left (L) or right (R) earbud once to start or pause media playback.

**Volume+:**  
Tap the right (R) earbud 3 times to increase the volume.

**Volume- :**  
Tap the left (L) earbud 3 times to decrease the volume.

**Next track/ previous track:**  
Double tap the right earbud (R) will play the next track.  
Double tap the left earbud (L) will play the previous track.

**PHONE MODE**

Tap the left (L) or right (R) earbud once to pick up or end a call.  
To reject a call, press and hold the left (L) or right (R) earbud for 2 seconds.

**GAME MODE**

**VOICE ASSISTANT INTERFACE**

Press and hold the right (R) earbud for 2 seconds to toggle between **Game** and **Music** modes.

Press and hold the left (L) earbud for 2 seconds to activate **Google Assistant** or **Siri** (on supported devices) .

**LED STATUS INDICATOR**

**STATUS**

**Description**

**POWER ON**

When opening the lid, the LEDs on both earbuds will initially blink two times. Then the LED light on right earbud will start blinking.

**POWER OFF**

Place each earbud in their corresponding slot. They turn off automatically when the lid is closed. To manually turn off the earbud, press and hold for 6 seconds.

**PAIRING**

The LED on the right earbud blinks once per second. It turns off when paired.

**LIGHT EFFECTS**

**Game mode**  
A static red LED light turns on both earbuds.

**Music mode**  
A breathing red LED light turns on for both earbuds.

**LOW BATTERY**

A prompt will be heard to warn the user it is time to recharge.

**EARBUD CHARGING**

Open the case to place earbuds inside the compartment.  
The LEDs on the earbuds briefly light up. Close the cover to start charging.  
The LED light of the logo will go into breathing mode.

**CASE CHARGING**

The LED on the charging case go into breathing mode.

**STAR  
WARS**

# III. BASIC OPERATION



### 3.1. Charging the case and earbuds

**Note:** The case and earphones have internal, non-removable, rechargeable batteries. Do not attempt to remove the battery as you may damage the device.

1. To charge the case, plug the USB cable into a power source and the Type-C in the case's port. The case starts charging automatically.
2. Charging the case battery with the earbuds inside to their full capacity may take up to 1.5 hours.
3. Charging the battery of the case alone when connected to the Type-C port will normally take 1.3 hours.
4. The fully charged buds have power for up to 3.5 hours of playback time, 3.5 hours of gaming time or up to 3 days of standby time.  
However, these times may vary depending on the mobile device used, on the usage profile, and on the calling/ listening habits of each individual user.
5. When the remaining battery power is low, an audible prompt will be heard to indicate that the earbuds need to recharge.

### 3.2. Turning your earphones on or off

1. The earbuds will automatically turn on as soon as they are taken out from the charging case. They will start synchronizing with each other and pairing at the same time, as well.
2. To turn the earbuds off, you can put them back in the charging case and close the lid. You may also turn on/off the earbuds by pressing and holding the **Multifunction** button for 6 seconds.

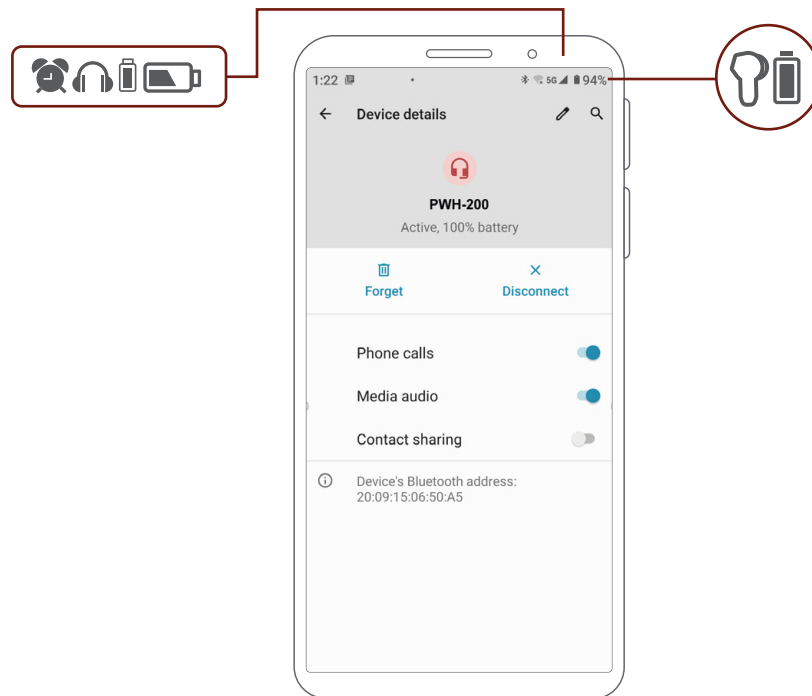


# IV. ADVANCED OPERATION



#### 4.1. Pairing your earbuds with a mobile device

1. Simply take the earbuds out of the charging case.
2. Set your *Bluetooth*® phone to “discover” the wireless earbuds.
3. Place the phone and earbuds within one meter of each other.
4. After both earbuds have synchronized with each other, the LED light on the right earbud will blink slowly to indicate that they have entered into the pairing process.
5. Select the **PWH-S220DV** earphone from the list of newly discovered devices in your phone.
6. Accept by pressing **Yes** or **OK** on the mobile device. Depending on your *Bluetooth*® version, you may be prompted to enter the passkey **0000** (4 zeros).
7. The **Connected** prompt will be heard once the wireless link has been successfully established. Now you can check the battery level on the status bar of your phone. This is supported on Android devices only.



- If after 60 seconds the pairing process fails, please repeat steps 1 through 6 as described above.
8. The earbuds work seamlessly in either mono or TWS stereo listening.
  9. You only need to pair the earphones with your phone once, as it will re-pair automatically.
  10. The automatic re-pairing feature will allow the headset to be reconnected after being switched back on or when placed again within wireless range.

## 4.2. Call management using your wireless earbuds

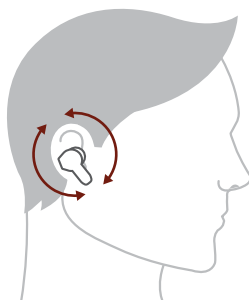
- When there is an incoming call, a ring tone will be heard through the earphones. Briefly tap the **Multifunction** button once on either earphone to pick it up. You may also press the answer button on your cellular phone to receive the incoming communication in your headset.
- To end a call, simply tap the **Multifunction** button once again.
- To ignore an incoming communication and send the caller to voicemail, press and hold the **Multifunction** button on either earbud.

## 4.3. Music playback and voice command using your wireless earbuds

- Touch the **Multifunction** control once on any earbud to play and stop audio playback.
- Tap the right **Multifunction** control twice to go to the next track, and the left one to go to the previous track.
- To enable the voice command feature in supported devices, tap and hold the **Multifunction** button on the left earbud for two seconds. Tap the **Multifunction** button once again to cancel the Voice Assistant.
- To switch between the available sound effects, press and hold the **Multifunction** button on the right earbud for 2 seconds. The Game mode prompt will be heard to notify that it has been switched on, activating at the same time the static light effect on both earbuds.

## 4.4. Wearing your earphones

- The earphones are intended to fit comfortably for all day hands-free wearing.
- Select the tip that best fits the size of your ear canal. Gently push the earphone into your ear. The earphone should rest securely and comfortably in your ear when properly inserted.



- Voice quality when speaking will be best when there are no obstacles between the mobile phone and earphones, including your body.

**STAR  
WARS**

# V. PROPER CARE



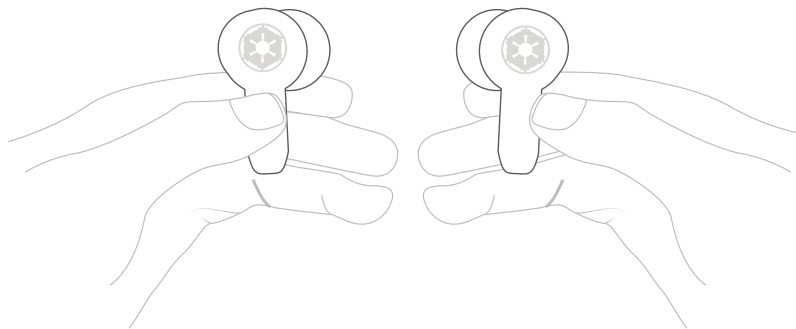
## 5.1. Troubleshooting

If you cannot connect the headset to your phone, do as follows:

- Ensure that the headset is charged, switched on, paired with, and connected to your phone.
- Ensure that the *Bluetooth*<sup>®</sup> feature is activated on your phone.
- Check that the headset is within 30 feet of your phone and that there are no obstructions between the headset and the phone, such as walls or other electronic devices.

### Factory reset

- A factory reset can be used to restore all features to their factory settings.
- Turn off the earbuds and unpair them from your mobile device.

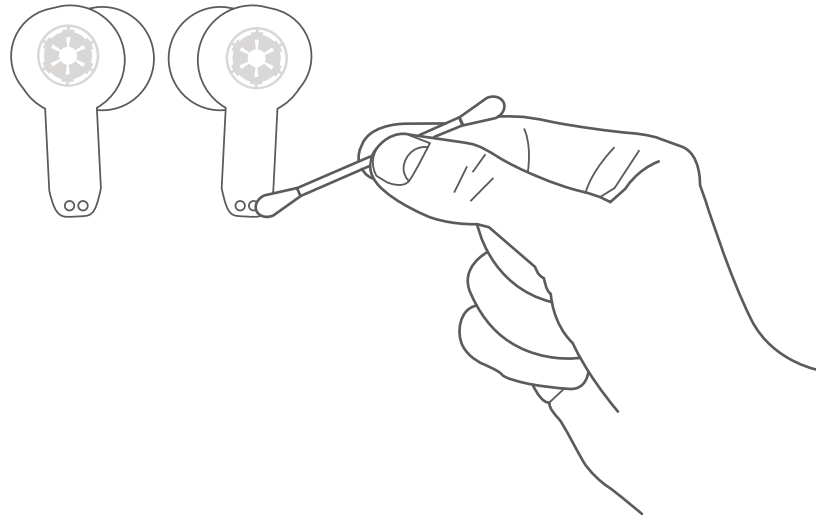


- Next, put them back on the charging case. The factory default settings on the device has now been restored.
- Open the case and proceed to connect to *Bluetooth*<sup>®</sup> as usual.

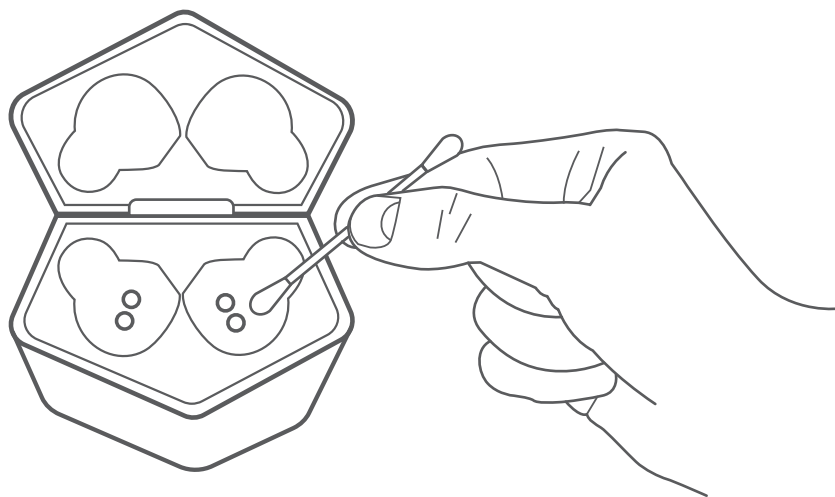
## 5.2. Cleaning the product

Use a clean cotton swab slightly moistened with alcohol to:

1. Remove earwax and dirt from the ear tips on your earbuds.
2. Clean the charging pins on your earbuds and in the charging case. Then, use a dry and soft cotton to rub down dust and lint.



3. Clean the grooves and the bottom of the charging case. After cleaning, make sure the charging case and earbuds are dry before putting the earbuds back into the charging case.



Tip: Repeat the operation every other week to keep your earbuds clean and not affect charging quality and the device's overall performance.

### 5.3. Precautions

- Your device is powered by rechargeable batteries. The batteries can be charged and discharged hundreds of times, but it will eventually wear out. Recharge the batteries only with compatible chargers designated for this device.
- Unplug the USB charger from the source when not in use.
- Parts of the device are magnetic. Metallic materials may be attracted to the device. Do not place credit cards or other magnetic storage media near the device, because information stored on them may be erased.
- Do NOT drop, hit, or shake the device.
- Do NOT disassemble, repair, or modify the earphones yourself.
- Do NOT use harsh chemicals, cleaning solvents, or strong detergents to clean the device.
- Do NOT expose headset to excessive heat or to direct sunlight for long periods of time.
- Do NOT store the device in a place with high humidity or dust.

## Technical specifications

DEVICE		PWH-5220DV	
TYPE	True Wireless Stereo gaming earbuds with portable charging case		
FORM FACTOR	In-ear		
BLUETOOTH® VERSION AND CHIPSET	Version 5.0 ATS3015		
FREQUENCY RESPONSE	20Hz-20kHz		
SIGNAL- TO-NOISE RATIO	≥90dB		
DC INPUT	≤30mA		
DRIVERS			
DRIVER UNIT	Φ10mm		
MAXIMUM POWER OUTPUT (RMS)	5mW		
FREQUENCY	20Hz~20kHz		
IMPEDANCE	16Ω		
SENSITIVITY	≥90dB		
MICROPHONE			
DIRECTIVITY	Omnidirectional		
SIGNAL- TO-NOISE RATIO	≥60dB		
OUTPUT IMPEDANCE	1000Ω		
SENSITIVITY	-42dB		
CONNECTIVITY			
CONNECTION TYPE	Bluetooth® V5.0 AVRCP/A2DP/HFP/HSP		
WIRELESS RF FREQUENCY	2.402GHz-2.480GHz		
WIRELESS RANGE	33ft <sup>1</sup>		
BATTERY			
CHARGING TIME	Charging case + earbuds	1.5 hours total	
	Earbud battery only	1 hour	
	Charging case battery only	1.3hours	
CHARGING CASE CYCLES	Approximately 5.5 cycles when fully charged		
RUN TIME <sup>2</sup>	Earbud battery only	3.5 hours (music mode at 50% volume) 3.5 hours (gaming mode at 50% volume)	
	Earbud total playtime, including case cycles	Up to 19 hours	
STANDBY TIME	3 days		
CHARGING METHOD	Type-C USB jack		
BATTERY TYPE	Polymer		
BATTERY CAPACITY	Earbud: 30mAh each		
	Charging case: 400mAh		
ADDITIONAL INFORMATION			
DIMENSIONS (WXHXD)	Charging case: 2.36x2.36x1.22in		
WEIGHT	Charging case: 1.4oz		
	42.5gr		
CABLE LENGTH	3ft		
WARRANTY	One year		

<sup>1</sup> Range estimate is based on an area free and clear of obstacles and interference, and within the line-of-sight between both Bluetooth® 5.0 devices

<sup>2</sup> It depends on the volume level and type of audio files being played

This equipment has been tested and found to comply with the limits for a Class B digital device, pursuant to part 15 of the FCC Rules. These limits are designed to provide reasonable protection against harmful interference in a residential installation. This equipment generates, uses, and can radiate radio frequency energy and, if not installed and used in accordance with the instructions, may cause harmful interference to radio communications. However, there is no guarantee that interference will not occur in a particular installation. If this equipment does cause harmful interference to radio or television reception, which can be determined by turning the equipment off and on, the user is encouraged to try to correct the interference by one or more of the following measures:

- Reorient or relocate the receiving antenna.
- Increase the separation between the equipment and receiver.
- Connect the equipment into an outlet on a circuit different from that to which the receiver is connected.
- Consult the dealer or an experienced radio/TV technician for help.

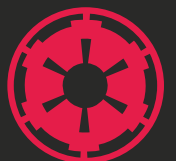
Primus® is a registered trademark. All other brand names and trademarks are the property of their respective owners. Any mention of such is only intended for identification purposes, and therefore shall not be construed as a claim to any or all rights pertaining to those brands. Made in China.



**STAR  
WARS**

 **PRIMUS**

SOFTWARE SETUP GUIDE



PWH-5220DV